

Cordially invites you to

Online

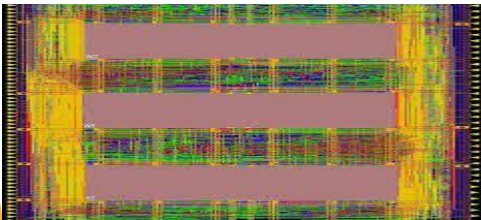
Faculty Coordinator : Dr. Iyapparaja M

Backend Implementation of VLSI Circuits

Resource Person :



Mr ETB Samuel Jigme Harrison,
Semiconductor Professional,
Senior IEEE Member,
Singapore.



Discussion Points :

- ❖ Introduction to Semiconductors & VLSI circuits
- ❖ Introduction to Physical Design
- ❖ Introduction to Innovus
- ❖ Floorplanning
- ❖ Power Planning
- ❖ Placement
- ❖ Clock Tree Synthesis
- ❖ Routing
- ❖ Static Timing Analysis
- ❖ Physical Verification
- ❖ Power Analysis
- ❖ Life in VLSI

**10 February - 2023
(Friday)@ 10:00AM-5:00PM**