



VIT[®]
Vellore Institute of Technology
(Deemed to be University under section 3 of UGC Act, 1956)

VITree

VIT Research Entrance Examination

JANUARY – 2024 Session



INFORMATION BROCHURE

Admission to Research Programmes

Ph.D. / Direct Ph.D.

VIT – A place to learn; A chance to grow

Index

S. NO.	CONTENTS	PAGE NO.
1	About VIT	3
2	About VITREE 2024 January Session	3
3	Research Programmes Offered In VIT at Various Campuses & Schools	4
	Research programmes offered at VIT-Vellore campus	4-6
	Research programmes offered at VIT-Chennai campus	7
	Research programmes offered at VIT-AP campus	8
	Research programmes offered at VIT-Bhopal campus	9-10
4	Minimum Qualification For Admission	11
5	Category And Eligibility	14
6	Selection Procedure For Foreign Nationals / NRI Candidates	15
7	Minimum Duration Of Study	15
8	Selection Procedure For National Candidates	16
9	Tuition Fees	16
10	Research Fellowship	17
11	Other Information	17
12	Important Instructions Pertaining To Computer Based Test For VITREE- January 2024	18
13	Test Cities	19
14	Important Dates	20
15	For Contact	21

1. ABOUT VIT

Dr. APJ Abdul Kalam was right in saying, “Dreams transform into thoughts and thoughts result in action” because Vellore Institute of Technology (VIT) is a dream of Dr. G. Viswanathan (Chancellor, VIT) come true. Founded in 1984 as Vellore Engineering College, it has grown by leaps and bounds to attain its present status as VIT, one of the premier institutions in India.

Our Strengths in a Nutshell

- ◆ More than 67,000+ students from all quarters of India and also from 54 different countries across the globe.
- ◆ 1900+ fully-qualified and highly experienced faculty and 230 adjunct professors from foreign universities
- ◆ 280+ MoUs with academic and research institutions in India and abroad • 1000 industry partners
- ◆ Highest number of research publications in India as per the Scopus Database (2016-2023)
- ◆ Research Fellowship will be awarded to all the Admitted Full Time Research Scholars by the VIT.

2. ABOUT VITREE 2024 JANUARY SESSION:

Vellore Institute of Technology Research Entrance Examination (VITREE) is conducted for admission to various Ph.D./Direct Ph.D. programmes in VIT group of Institutions. VITREE- January 2024 session will be conducted on 10th December 2023 in 33 cities across India. The duration of the examination will be 2 hours. All questions will be Multiple Choice Questions and one mark for right and '0' mark for the wrong answer. The question paper for Ph.D. will have 100 MCQs (Technical – 70 questions; English communication skills – 15; Statistics and probability – 15 questions) and the question paper for Direct Ph.D. will have 100 MCQs (Technical – 80 questions; English communication skills – 20 questions). The question paper will be in English only.

VIT[®]
Vellore Institute of Technology
(Deemed to be University under section 3 of UGC Act, 1956)

nirf NATIONAL INSTITUTIONAL RANKING FRAMEWORK	9 th best University 10 th best in Research 12 th best in Engineering
SHANGHAI RANKING	World's Top 601-700 India's Top 2-3
QS WORLD UNIVERSITY RANKINGS	Asia's Top 173 346 th in the World in Engineering and Technology
THE WORLD UNIVERSITY RANKINGS	World's Top 801-1000 18 th In India
NAAC NATIONAL ASSESSMENT AND ACCREDITATION COUNCIL	A++ Accreditation by National Assessment and Accreditation Council (NAAC)
TOP 2%	48 VIT Professors are among the top 2% scientists in the world, Stanford University Study, 2022
FICCI	Excellence in Implementing Institutional Social Responsibility award by Federation of Indian Chamber of Commerce and Industry (FICCI), Nov-2022

Our Management Programmes are accredited by

ACBSP
GLOBAL BUSINESS ACCREDITATION

AACSB
ACCREDITED

3. RESEARCH PROGRAMMES OFFERED IN VIT AT VARIOUS CAMPUSES WITH SCHOOLS ARE DETAILED BELOW

- **VIT-Vellore campus** only Internal Full -Time [IFT] category is offered.
- **VIT-Chennai campus** Internal Full -Time [IFT] category is offered and Internal-Part Time [IPT is offered only for VIT faculty members].
- **VIT-AP campus** Internal Full Time [IFT] category is offered and Internal Part Time [IPT is offered only for VIT faculty members].
- **VIT-Bhopal campus** both Internal Full Time [IFT] and External Part Time [EPT] categories are offered.

Research Programmes Offered at VIT-Vellore campus:

School	Specialization	Major Area of Interest	Programmes		Question paper Code	
			Ph.D. (IFT)	Direct Ph.D. (IFT)	Ph.D. (IFT)	Direct Ph.D. (IFT)
School of Advanced Sciences (SAS)	Physics	Physics	✓	×	PHY	-
	Chemistry	Chemistry	✓	×	CHY	-
	Mathematics	Mathematics	✓	×	MAT	-
	Data Science	Data Science	✓	×	MAT	-
School of Bio Sciences & Technology (SBST)	Bio Sciences and Biotechnology	Bio Sciences and Biotechnology	✓	✓	BBT	BT
	Life Science	Life Science	✓	×	SLS	-
School of Civil Engineering (SCE)	Civil Engineering	Structural, Geotechnical and Construction Management, Environmental, Water Resources, Transportation and Remote sensing & GIS	✓	✓	CVL	CI
School of Chemical Engineering (SCHEME)	Chemical Engineering	Solid Waste management, Separation Processes- Water treatment - Adsorption studies, Membrane - Colloids and Polymers, Hydrodynamic - Process Modelling simulation	✓	✓	CEE	CE

School	Specialization	Major Area of Interest	Programmes		Question paper Code	
			Ph.D. (IFT)	Direct Ph.D. (IFT)	Ph.D. (IFT)	Direct Ph.D. (IFT)
School of Computer Science and Engineering (SCOPE) & School of Computer Science Engineering and Information Systems (SCORE)	Computer Science and Engineering / Information Technology	Computer Science and Engineering / Information Technology	✓	✓	CIE	IT
School of Electrical Engineering (SELECT)	Electrical and Electronics Engineering	Electrical and Electronics Engineering	✓	✓	ELE	EE
	Electronics and Instrumentation Engineering	Electronics and Instrumentation Engineering	✓	✓	EIE	EI
School of Electronics Engineering (SENSE)	Electronics and Communication Engineering	Electronics and Communication Engineering	✓	✓	ECE	EC
	Biomedical Engineering	Biomedical Engineering	✓	✓	BME	BM
School of Mechanical Engineering (SMEC)	Mechanical Engineering	Manufacturing Engineering	✓	✓	MEE	ME
		Automotive Engineering	✓	✓		
		Mechatronics	✓	✓		
		Design and Automation	✓	✓		
		Thermal and Energy Engineering	✓	✓		
School of Social Sciences and Languages (SSL)	English	English	✓	×	ENG	-
	Commerce & Accountancy	Commerce & Accountancy	✓	×	CMA	-
	Psychology	Psychology	✓	×	PSY	-
	Sociology	Sociology	✓	×	SOY	-
	Social Work	Social Work	✓	×	SLW	-
	Economics	Economics	✓	×	ECO	-
	Tamil	Tamil	×	×	TAM	-
	Hindi	Hindi	✓	×	HIN	-
	French	French	✓	×	FRC	-
	History	History	✓	×	HIS	-
	International Relations	International Relations	✓	×	IRA	-

School	Specialization	Major Area of Interest	Programmes		Question paper Code	
			Ph.D. (IFT)	Direct Ph.D. (IFT)	Ph.D. (IFT)	Direct Ph.D. (IFT)
VIT Business School (VITBS)	Business Administration in Management	General Management - Marketing - HR and OB - Finance, Accounts and Economics - Production, Operations, Systems and Quantitative Methods	✓	×	MGT	-
VIT School of Design (V-SIGN)	Design	Design, Product Design, Product Semiotics, Ergonomics, Multi Media, Film studies, Digital Media, Communication Studies	✓	×	VSD	-
School of Hotel & Tourism Management (HOT)	Hospitality Management	Hospitality Management	✓	×	HOT	-
VIT School of Agricultural Innovations And Advanced Learning. (VAIAL)	Agriculture	Agri-business Management	✓	×	ABM	-
		Agronomy	✓	×	AGR	-
		Plant Breeding and Genetics	✓	×	PBG	-
		Agricultural Biotechnology	✓	×	ABT	-
		Agricultural Entomology	✓	×	AET	-
		Agricultural Engineering	✓	×	AEG	-
		Microbial Technology	✓	×	MBT	-
		Food Science and Technology	×	×	FST	-
		Horticulture	✓	×	HRT	-
		Agricultural Extension Education	✓	×	AEE	-
		Plant Pathology	✓	×	PPY	-
		Seed Science and Technology	✓	×	SST	-
School of Architecture (V-SPARC)	Architecture and Planning	Architecture and Planning	✓	×	ATR	-

Research Programmes Offered at VIT-Chennai campus:

School	Specialization	Major Area of Interest	Programmes			Question paper Code	
			Ph.D. (IFT)	Ph.D. (IPT)	Direct Ph.D. (IFT)	Ph.D. (IFT)	Direct Ph.D. (IFT)
School of Advanced Sciences (SAS)	Mathematics	Mathematics	✓	×	×	MAT	-
	Chemistry	Chemistry	✓	×	×	CHY	-
	Geology	Geology	✓	×	×	GEO	-
	Physics	Physics	✓	×	×	PHY	-
School of Computer Science and Engineering (SCOPE)	Computer Science and Engineering	Computer Science and Engineering / Computer Science, Information Technology	✓	✓	✓	CIE	IT
School of Electrical Engineering (SELECT)	Electrical and Electronics Engineering	Electrical and Electronics Engineering	✓	×	×	ELE	-
School of Electronics Engineering (SENSE)	Electronics and Communication Engineering	Electronics and Communication Engineering	✓	✓	✓	ECE	EC
School of Mechanical Engineering (SMEC)	Mechanical Engineering	Materials and Manufacturing, Design, Mechatronics and Automation, Thermal, Automotive and Energy Engineering	✓	×	✓	MEE	ME
School of Social Sciences and Languages (SSL)	English	English	✓	×	×	ENG	-
	Sociology	Sociology	✓	×	×	SOY	-
	Social Work	Social Work	×	×	×	SLW	-
	French	French	✓	×	×	FRC	-
School of Civil Engineering (SCE)	Civil Engineering	Environmental and Structural	✓	×	×	CVL	-
VIT Business School(VITBS)	Business Administration in Management	Marketing, Human Resource Management, Finance, Systems, Operations & Analytics	✓	×	×	MGT	-
VIT Fashion Institute of Technology (VFIT)	Fashion Technology	Fashion / Textiles	✓	✓	×	FTY	-
VIT School of Law (VITSOL)	LAW	International Law, Constitutional Law, Labour Law, Administrative Law, Criminal Law, Intellectual Property Rights, Business Law, Environmental Law, Human Rights Law, Cyber Law, International Humanitarian Law	✓	✓	×	LAW	-

* Internal Part Time [IPT] is offered only for VIT faculty members at Chennai campus

Research Programmes Offered at VIT-AP campus:

School	Specialization	Major Area of Interest	Programmes		Question paper Code
			Ph.D. (IFT)	Ph.D. (IPT)	Ph.D. (IFT)
School of Advanced Sciences (SAS)	Physics	Physics	✓	✓	PHY
	Chemistry	Chemistry	✓	✓	CHY
	Mathematics	Mathematics	✓	✓	MAT
	Data Science	Data Science	✓	✓	MAT
School of Computer Science and Engineering (SCOPE)	Computer Science, Information Technology	Computer Science, Information Technology	✓	✓	CIE
School of Electronics Engineering (SENSE)	Electronics and Communication Engineering,	Electronics and Communication Engineering,	✓	✓	ECE
	Electrical Engineering	Electrical Engineering	✓	✓	ELE
School of Mechanical Engineering (SMEC)	Mechanical Engineering	Mechanical Engineering	✓	✓	MEE
VIT-AP School of Business (VSB)	Management	Management	✓	✓	MGT
	Economics	Economics	✓	✓	ECO
VIT-AP School of LAW (VSL)	Law	Law	✓	✓	LAW
VIT-AP School of Social Sciences & Humanities (VISH)	English	English	✓	✓	ENG
	Psychology	Psychology	✓	✓	PSY
	French	French	✓	✓	FRC
	Geography	Geography	✓	✓	GPY

* Internal Part Time [IPT] is offered only for VIT faculty members at VIT.AP campus

Research Programmes Offered at VIT-Bhopal campus:

School	Subject	Major Area of Interest	Programmes		Question paper Code
			Ph.D. (IFT)	Ph.D. (EPT)	Ph.D.
School of Advance Science and Languages (SASL)	Mathematics	Fractional Differential equations, Fixed Point theory and applications, Numerical Computational and Statistical Techniques, Artificial intelligence with mathematical approach, Optimization techniques, Mathematical modeling and analysis in bio medical sciences. Fluid dynamics, Statistics	✓	✓	MAT
	Physics	Computational Biophysics, Molecular Modeling, Solar Physics, Space Weather, Ionospheric Physics, Atmospheric Sciences, Ionospheric Plasma, Space communication (GPS), Material Science, Photonics, Photo electro chemistry, Soft Condensed Matter Physics, Advanced materials for energy harvesting and storage, Optics and Optical Instrumentation, Time series analysis of complex systems.	✓	✓	PHY
	Chemistry	Computational Chemistry, Molecular Modeling, Quantum Chemistry, Computational Biochemistry, Electrochemistry, Corrosion Inhibitors, Aqueous Solutions.	✓	✓	CHY
	English	English Literature, Language Teaching, Theoretical & Applied Linguistics, English Language teaching	✓	✓	ENG
School of Biosciences, Engineering and Technology (SBET)	Biosciences, Engineering and Technology	Molecular Photonics, Biomedical Sciences, Public Health, Health Informatics, Drug Delivery & Bioinformatics, Biotechnology	✓	✓	BBT
School of Computing Science and Engineering (SCSE)	Computing Science and Engineering	Computer Science, Information Technology, Core Computing Sciences, Artificial Intelligence & Machine Learning, Data Science, Cyber Security & Digital Forensics, Gaming Technology, Human-Computer Interaction	✓	✓	CIE

School	Subject	Major Area of Interest	Programmes		Question paper Code
			Ph.D. (IFT)	Ph.D. (EPT)	Ph.D.
School of Electrical and Electronics Engineering (SEEE)	Electrical and Electronics Engineering	Electrical Engineering, Electronics Engineering, VLSI, Computer Vision & Image Processing, Antenna Systems, IoT, Advance communication Systems, Non-Linear Communication Systems	✓	✓	ELE
	Electronics and Communication Engineering		✓	✓	ECE
School of Mechanical Engineering (SMEC)	Mechanical Engineering	Mechanical Engineering	✓	✓	MEE
		Materials			
		Manufacturing			
		CFD			
		Design			
		Thermal Science			
		Robotics & Automation			
		Aerospace			
VIT Business School (VITBS)	Business Administration in Management	Finance	✓	✓	MGT
		IT & Analytics, Economics	✓	✓	

4. Minimum Qualification for Admission

Ph.D. in Engineering Stream:

- 10+2+4+2 (pattern of studies) or any equivalent in Engineering degree
- 10+2+5 year Integrated M.Tech. programme, Integrated M.S Programme in Engineering
- 10+2+4+1 for Ph.D. in Engineering (Foreign Degree holders also eligible to apply)

Ph.D. in Non-Engineering Stream:

- 10+2+3+2 (pattern of studies) or any equivalent in Non-Engineering degree
- 10+2+5 year Integrated. M.Sc. (Biotech) in Non- Engineering degree

Direct Ph.D. in Engineering Stream:

- 10+2+4 or 5 (pattern of studies) or any equivalent degree in Engineering degree

Ph.D. in Engineering:

Master's degree in Engineering / Technology in the relevant discipline with a minimum of 60% marks (of all the years /semesters) wherever marks are awarded, or a CGPA 6.5 on a 10-point scale in cases where letter grades are awarded or Equivalent qualifications like M.Sc. (Engineering) / M.S. [By Research] / M.Tech. [By Research].

M.Sc. Computer Science, M.Sc. (IT), and MCA degree holders are eligible to apply for a Ph.D. Programme in Computer Science Engineering / Information Technology.

For all research programmes, it is mandatory that candidates should have studied their previous degree programmes (UG and PG) in the regular, full-time mode.

For Direct Ph.D. in Engineering / Technology:

Graduates must have an outstanding academic record in their Bachelor's Degree in Engineering / Technology is eligible to apply. A minimum of 75% marks or a CGPA of 7.5 is mandatory on a 10- point scale.

For Ph.D. in Sciences:

Master's degree in the relevant discipline of science with a minimum of 60% marks or a CGPA of 6.5 on a 10-point scale is mandatory.

For Ph.D. in Languages:

Master's degree in the relevant discipline of Social sciences and Languages with a minimum of 60% marks or a CGPA of 6.5 on a 10-point scale is mandatory.

For Ph.D. in Management:

A master's degree in Business Administration / CA / ICWA with a minimum of 60% marks or a CGPA of 6.5 on a 10-point scale is needed.

For Ph.D. in Hospitality Management: (Offered in Vellore Campus Only)

Candidates must have a master's degree in Hotel Management {(MHM, M.Sc.-HM, MHMCT, MBA (Hospitality)} or Tourism Management {MA (Tourism), MTM, MTTM, MBA (Tourism)} from any accredited Indian or Foreign university with a minimum of 60% marks or a CGPA of 6.5 on a 10- point scale.

For Ph.D. in Design & Planning: (Offered in Vellore Campus Only)

A master's degree in Design / Planning, M.Tech, M.E., MSc (Physiology), any master's degree in Arts, Media Studies, Multimedia and Animation in full-time or regular mode of education with 60% marks, or a CGPA of 6.5, on a 10-point scale is mandatory.

For Ph.D. in Architecture and Planning (Offered in Vellore Campus Only)

Candidates should have a bachelor's degree in Architecture/ Planning and a master's degree in Architecture/ Design/Planning/Building Engineering and Management or its equivalent in full-time or regular mode of education with an aggregate of 60% (of all the years/semesters) or a CGPA of 6.5 on a 10-point scale wherever letter grades are awarded.

Eligibility for Ph.D. in Agriculture (Offered in Vellore Campus Only)**1. Agronomy**

M.Sc. (Agriculture) in Agronomy with a minimum of 60% marks or 6.5 CGPA on a 10-point scale.

2. Plant Breeding and Genetics

M.Sc. (Agriculture) in Plant Breeding and Genetics with a minimum of 60% marks or 6.5CGPA on a 10-point scale.

3. Agricultural Biotechnology

M.Sc. or M.Tech in Agricultural Biotechnology / Biotechnology / Molecular Biology and Biotechnology or an M.Sc. in any other relevant agriculture subjects with a minimum of 60% marks or a 6.5 CGPA on a 10-point scale

4. Agricultural Entomology

M.Sc. (Agriculture) in Agricultural Entomology with a minimum of 60% marks or a 6.5CGPA on a 10-point scale

5. Agricultural Engineering

B.E/ B.Tech in Agricultural/Environmental/Civil/Mechanical or any equivalent discipline and M.E/M.Tech in Soil and Water Conservation /Environmental/ Land and Water Resource/ Irrigation/ Farm Machinery and Power engineering or any other equivalent discipline with a minimum of 60% marks or 6.5 CGPA on a 10-point scale.

6. Microbial Technology

M.Sc. Microbiology, M.Sc. Biotechnology, M.Sc. Biochemistry, M.Sc. Agricultural Microbiology with a minimum of 60% marks or 6.5 CGPA on a 10-point scale.

7. Food Science and Technology

Master's degree in Food Science / Food Science and Technology / Food Technology / Food Processing / Post Harvest Technology / Dairy Technology and related disciplines with a minimum of 60% marks or 6.5 CGPA on a 10-point scale.

8. Horticulture (Fruit Science, Vegetable Science, Floriculture and Landscaping)

M.Sc. Horticulture with specialization in the specific subjects with a minimum of 60%marks or 6.5 CGPA on a 10-point scale.

9. Agricultural Extension Education

Master's degree in Agricultural Extension/Agricultural Extension & Communication / Agricultural Extension Education/Veterinary Extension/Dairy Extension/Fisheries Extensionwith a minimum of 60% marks or 6.5 CGPA on a 10-point scale.

10. Agri-business Management

Master's degree in Agri-business Management, /Agricultural Marketing & Co-operation / Agricultural Economics/ Business Management with specialization in Agriculture with a minimum of 60% marks or 6.5 CGPA on a 10-point scale.

11. Plant Pathology

M.Sc. Plant Pathology with a minimum of 60% marks or 6.5 CGPA on a 10-point scale.

12. Seed science and Technology

M.Sc. Seed science and Technology with a minimum of 60% marks or 6.5 CGPA on a 10-point scale.

Eligibility for Ph.D. in Law: (Offered in VIT-Chennai & VIT-AP Campuses Only)

Master's Degree in law (LLM / ML) from any recognized university / Institute, in the relevant field with a minimum of 60% marks or 6.5 CGPA on a 10-point scale.

Eligibility for Ph.D. in Fashion Technology: (Offered in Chennai Campus Only)

Master's degree in the relevant areas of Technology, Design / Science (or) Management (or) equivalent qualification from an institute/ university of national/ international repute with a first class or a minimum of 60% marks/CGPA 6.5 on a 10-point scale.

Relevant Areas

1. **Technology**- M.E / M.Tech. / M. Fashion Tech. / M.S [By Research] / M.Tech [By Research] in the field of Textile Tech. / Textile Engg. / Fibre Science / Textile Chemistry / Textile Chemical Processing / Fashion Tech. / Apparel Tech. / Garment Technology.
2. **Design / Science** - M.Design / M.Sc. in the field Costume Design and Fashion / Apparel Design / Fashion Design / Apparel and Fashion Design / Textile Design / Textile and Apparel Design / Knit-wear Design / Accessory Design is needed.
3. **Management** - Candidates must have a master's degree in the field of Fashion Management / Apparel Management / Fashion Marketing/ Fashion Merchandising.

5. Category and Eligibility

Eligibility for Internal Full Time:

A candidate who wishes to work for Ph.D. / Direct Ph.D. degree on full-time basis (including project staff working in sponsored projects being carried out at VIT) should apply in the prescribed form on or before the specified date.

Eligibility for External Part-Time: (Offered in VIT-Bhopal Campus only)

Teachers working in other colleges in a permanent position and candidates sponsored by R&D organizations of following categories are eligible to apply to work on a part time basis for Ph.D.

- Laboratories run by the Council of Scientific and Industrial Research/ Department of Atomic Energy / Department of Space etc.
- Public Sector undertakings with R & D Units.
- Private Industries recognized by The Department of Scientific and Industrial Research, *Government of India* as engaged in R&D work or contributing to R&D efforts. A copy of the certificate issued by the Department of Scientific and Industrial Research (DSIR) in this regard will be required to be produced in such cases.
- Medical Industry, Institutions and Hospitals with approved R&D in the relevant area. (A copy of the certificate issued by the appropriate authority to be produced).

6. Selection Procedure for Foreign Nationals / NRI Candidates:

Foreign nationals / NRI candidates can only register as full-time scholars through separate link: <https://admissions.vit.ac.in/irapplicationpg/>

Foreign Nationals Guidelines:

The following are eligible to apply for a Ph.D. programme:

- Candidates of foreign nationality who hold degrees from Indian Universities seeking admission to research programmes with the necessary clearance from the Government of India (The Ministry of Human Resource Development)
- Candidates mentioned above who possess a valid visa will be treated on par with Indian nationals for purposes of admission to the Institute.
- Foreign nationals with foreign degrees who meet the minimum educational requirements as given in Section 3
- Foreign nationals whose degrees are equivalent to Indian degrees mentioned in Section 3 in Engineering / Technology / Science and who hold a good academic record
- International candidates who have a good working knowledge of English.

Please Note: Candidates with valid GRE and TOEFL scores will be given preference. The case of each foreign applicant will be examined and admission will be offered purely on merit. The fee is payable only as USD.

NRI Guidelines:

Indian nationals having degrees from Indian universities and whose parents work outside India may apply as NRI candidates. After receiving their application and required documents, they will be interviewed via Skype or other standard meeting platforms web technology. The fee is payable only as USD.

7. Minimum Duration of Study

Doctor of Philosophy(Ph.D.)

The minimum duration of study and research from the date of registration for the Ph.D. programme to the date of submission of thesis will be 30 months for full-time research scholars and 36 months for part-time research scholars.

Direct Ph.D.

The minimum duration of study and research from the date of registration for the Direct Ph.D. programme to the date of submission of thesis will be 4 years.

8. Selection Procedure for National Candidates

Ph.D.

Selection will be based on the performance in the VITREE – January 2024 score, PG degree marks, research proposal, and personal interview. Candidates who fulfil the eligibility criteria prescribed, shall appear for VITREE - January 2024, a two-hour Computer-Based Test (CBT). VITREE will be conducted on 10th December 2023. The question paper will have 100 MCQs (Technical – 70 questions; English communication skills – 15 questions; Statistics and probability – 15 questions). Candidates may choose their venue and the campus where they wish to pursue their Ph.D. Change of Campus, Venue, Date of Entrance Exam, Interview and specialization will not be permitted.

The shortlisted candidates should appear for personal interview. Refer the important dates in the page No.20. The selected candidates for admission will be intimated through email / SMS.

Direct Ph.D.

Selection based on the performance in the VITREE – January 2024 score, B.E. / B.Tech degree marks, research proposal and personal interview. Candidates who fulfil the eligibility criteria prescribed, shall appear for VITREE – January 2024, a two-hour Computer-Based Test (CBT). VITREE will be conducted on 10th December 2023. The question paper will have 100 MCQs (Technical – 80 questions; English communication skills – 20 questions). Candidates may choose their venue and the campus where they wish to pursue their Ph.D. Change of Campus, Venue, Date of Entrance Exam, Interview and specialization will not be permitted.

Shortlisted candidates should appear for a personal interview. Please refer the important dates in the page No.20. The selected candidates for admission will be intimated through email / SMS.

9. Tuition Fees

Programmes	Caution Deposit	Tuition Fee per Annum	Thesis Fee*
Ph.D. Internal Full-Time	₹ 3,000	₹ 40,000	₹ 10,000
Ph.D. External Part-Time (Teachers)	₹ 3,000	₹ 60,000	₹ 10,000
Ph.D. External Part-Time (Industry)	₹ 3,000	₹ 75,000	₹ 10,000
Direct Ph.D.	₹ 3,000	₹ 40,000	₹ 10,000

*** Thesis fee to be paid at the time of submission only**

10. Research Fellowship (Ph.D)

VIT Fellowship	GATE Qualified (Above 60 Percentile)	Others
First year	₹ 31,000	₹ 25,000
Second year	₹ 35,000	₹ 31,000
Third year	₹ 35,000	₹ 31,000

11. Research Fellowship (Direct Ph.D)

VIT Fellowship	GATE Qualified (Above 60 Percentile)	Others
First Two years	₹ 21,000	₹ 16,000
Third and Fourth year	₹ 30,000	₹ 25,000

- Dr. A.P.J. Abdul Kalam Award for review paper publications.
- Apart from this, scholars are encouraged to apply for JRF (CSIR / UGC) / Inspire Fellowships / Rajiv Gandhi Scholarships and other Govt. scholarships.
- Raman Research Award up to ₹ 1 lakh for research publications exclusively for scholars.

12. Other Information

- May 2023/December 2023 qualifying degree or result awaited candidates are also eligible to apply for VITREE.
- Application fee and tuition fee will not be refunded under any circumstances.
- Hostel accommodation is available for research scholars.
- All suits and actions arising out of, or relating to, VIT shall be instituted within the jurisdiction of courts at Vellore, Tamil Nadu.
- For queries related to research, please contact respective campus Dean Academic Research

- (i) Vellore : dean.ar@vit.ac.in
- (ii) Chennai : deancc.acadresearch@vit.ac.in
- (iii) VIT-AP : dean.acadresearch@vitap.ac.in
- (iv) VIT-Bhopal : dean.research@vitbhopal.ac.in

13. Important Instructions Pertaining to Computer-Based Test for VITREE – January 2024 Session:

Date	Session	Test Cities
	Forenoon (10:00 AM to 12:00 Noon) Afternoon (2:30 PM to 4:30 PM)	
10-12-2023	Ph.D./Direct Ph.D.	33

- Candidates are expected to arrive at the examination hall at least 1 hour before the commencement of examination, with their admit-card (hard-copy). If a candidate does not report on time, he / she is likely to miss the general instructions given in the exam hall.
- Candidates will not be permitted to enter the examination hall after 10.15 am.
- Candidates are instructed to complete registration process with the help of hall invigilators
- Each candidate will be allotted a computer by the hall invigilator to take the CBT.
- Candidates are not permitted to carry any text material (printed / written), slide rulers, log tables, electronic watches with facility of calculator, mobile phones or any other electronic devices.
- Candidate should bring a pencil or pen to carry out any rough calculations. A scratch pad will be provided during the CBT.
- The test will start exactly at the time specified in the admit-card and an announcement will be made by invigilator at the start, and at the end of the exam.
- During the exam process, the hall Invigilator can request for the admit-card for verification of the candidate's identity.
- The CBT comprises of Multiple Choice Questions (MCQ) with the question number and the time left for the exam to be completed appearing at the top center of the computer screen.
- Candidate will not be permitted to take extra time under any circumstances, unless and otherwise permitted by the Centre Superintendents.
- For each question, candidates should select the right option using the mouse.
- Candidates will not be permitted to leave the exam hall until the completion of the exam.
- Candidates are requested to keep the admit-card safely with them and bring it during the admission process. Candidate should produce the admit-card on demand.

14. Test Cities-VITREE 2024 January Session

VITREE Research Entrance Exam (VITREE) Date: 10-12-2023

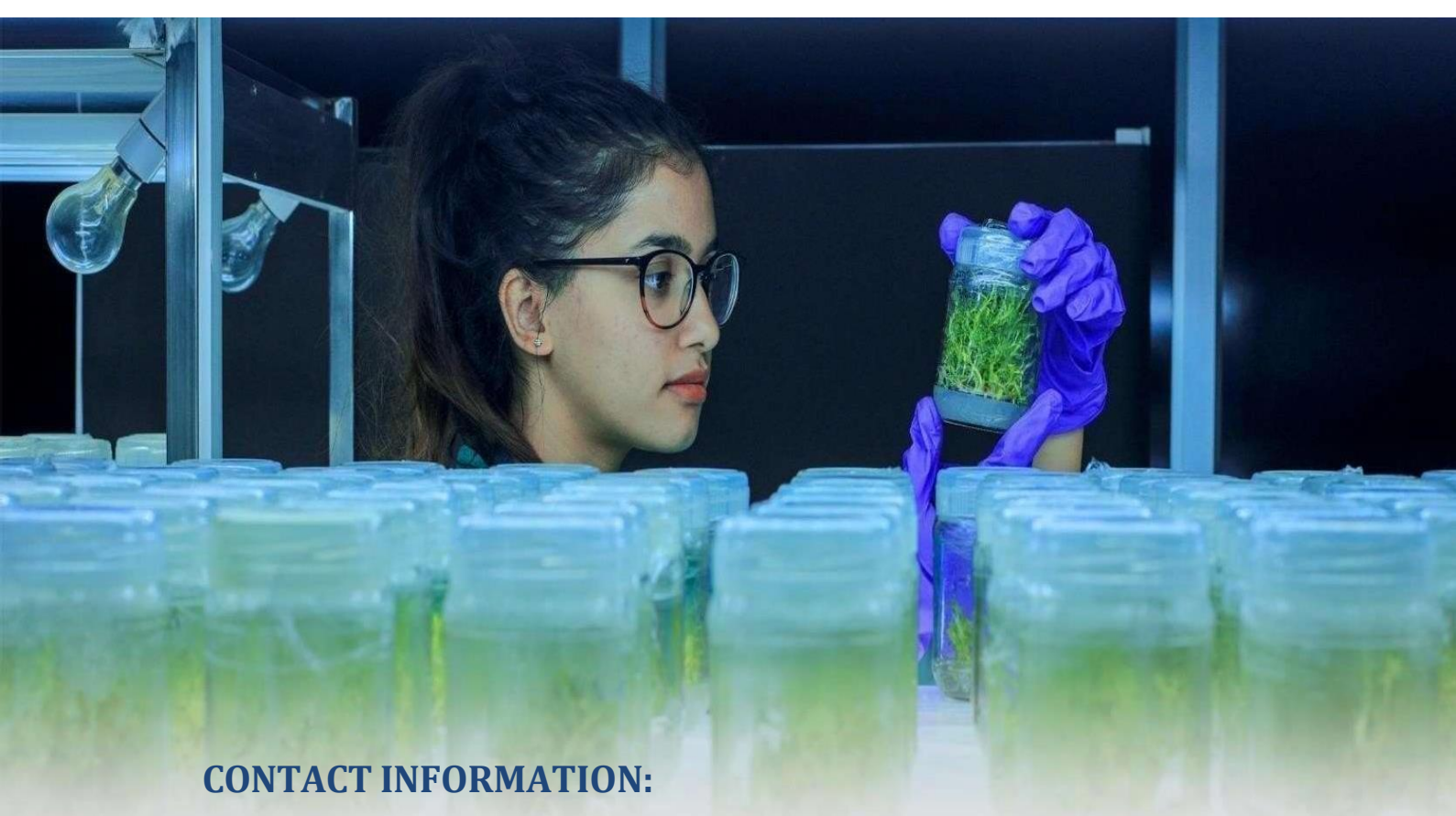
STATE	CITY
Andhra Pradesh	Amaravati (AP)
	Vishakapatnam
	Ananthapur
	Tirupati
Assam	Guwahati
Bihar	Patna
Chattisgarh	Raipur
Delhi	Delhi
Jammu & Kashmir	Srinagar
Karnataka	Bengaluru
Kerala	Kochi
	Thiruvananthapuram
	Thrissur
	Kozhikode
Madhya Pradesh	Bhopal
Maharashtra	Mumbai
	Pune
	Kolhapur
	Nagpur

STATE	CITY
Odisha	Bhubaneswar
Puducherry	Puducherry
Rajasthan	Jaipur
Telangana	Hyderabad
Tamil Nadu	Chennai
	Coimbatore
	Madurai
	Nagercoil
	Salem
Uttar Pradesh	Vellore
	Varanasi
	Lucknow
Uttarakhand	Dehradun
West Bengal	Kolkata

Note: Hostel Accommodation is available for January 2024 research scholars.

15. Important Dates (Tentative)

Issue of online application	11 th September 2023 (Mon)
Last date for submission of application	30 th November 2023 (Thu)
Date of VITREE through Computer Based Test	10 th December 2023 (Sun)
Date of personal interview	16 th December 2023 (Sat)
Declaration of results	22 nd December 2023 (Fri)
Last date for selecting a guide	31 st December 2023 (Sun)
Last date for paying tuition fees through online	31 st December 2023 (Sun)
Reporting in person at VIT, Vellore	To be announced



CONTACT INFORMATION:

VIT-Vellore:

Director - PG Admissions
VIT Vellore
Vellore- 632014, Tamil
Nadu, INDIA
Phone: +91-416 220 2188
Fax: +91-416 22430922
Email: researchadmission@vit.ac.in
Website: www.vit.ac.in

VIT-Chennai:

Deputy Director - Admissions
VIT Chennai
Vandalur - Kelambakkam Road
Chennai - 600 127,
Tamil Nadu, INDIA
Phone: +91-44 3993 1555
Email: chennai.dydiradmission@vit.ac.in

VIT-AP:

Deputy Director - Admissions
VIT AP University
Inavolu, (Beside AP Secretariat)
Near Vijayawada, 522 237
Andhra Pradesh, INDIA
Phone : 0863 2370444 / 7901091283
Email: deputydir.admissions@vitap.ac.in

VIT-Bhopal:

Assistant Director - Admissions
VIT Bhopal University
Bhopal-Indore Highway
Kothrikalan, Sehore
Madhya Pradesh - 466114
Phone : 91756025 4500/ 501/ 502
WhatsApp: 73586 13555, 73586 21555
Email: ad.admission@vitbhopal.ac.in



/vituniversity



/vellore vit



www.vit.ac.in



/VIT univ



/VelloreInstituteofTechnology

